



ANNUAL BULL SALE

Saturday,

March 14, 2026

1:00 pm

Buffalo Livestock Marketing
Buffalo, Wyoming



Kenny Institution 2010



**41 YEARLING ANGUS & BALANCER®
BULLS**
20 YEARLING COMMERCIAL HEIFERS

This sale will be broadcast live on the internet.

DVAuction

Broadcasting Real-Time Auctions

Real time bidding & proxy bidding available.

Welcome to our sale!

Hello fellow beef producers,

Welcome to our annual bull sale March 14, 2026. What a unique time to be in the beef industry. As we experience record high cattle prices it is rewarding to be compensated for the hard work that goes into raising and supplying a wholesome, nutritious food product for our nation's population. Hopefully the trend continues and we can all prosper.

Every year we work to achieve our goal of raising bulls that are easy calving and functional while maintaining growth and productivity. We want our cattle to balance those traits in attractive packages. It is our sincere hope that we have done our job to raise bulls that are productive and profitable sires. This pen of bulls shows the right traits to do just that. As always, our cattle are raised without the aid of creep feed or special treatment. The bulls are developed on a 16% protein grower pellet and grass hay. This ration is designed to grow and develop the bulls, but not get them overly fat. We feel this helps them maintain good feet and body condition when they go to work.

Thank you to all of you who have supported us in the past! We are so humbled that you have placed confidence in our genetics and allow us to have an impact on your program. It is important to us that we have a positive impact and we want to keep moving forward in the beef industry.

All bulls have passed a breeding soundness exam and will be available for viewing here at the ranch until the day of the sale. You are welcome to stop in and see them anytime. Visit our website (mtrcattlecompany.com), Facebook page (MTR Cattle Company), or DVAuction.com for videos of the bulls. Best wishes for a prosperous year and we hope to see you at our sale on March 14th.

Thank you again and best wishes,

MTR Cattle Co.
Miles, Tiffany, Lauren and Taylor Rives



P.O Box 392
37 TW Road
Buffalo, Wyoming 82834
Miles 307-217-0408 * Tiffany 307-217-0409
Email: mtrctco@vcn.com
Website: mtrcattlecompany.com
Facebook: MTR Cattle Company

Sale Day Information

TIME AND LOCATION

Saturday, March 14, 2026 • 1:00 p.m. (MST)

At Buffalo Livestock Marketing
44 TW Road Buffalo, Wyoming

SALE DAY PHONES

BLM sale day phone 307-684-0789

Miles 307-217-0408

Tiffany 307-217-0409

Others available sale day—contact Miles or Tiffany for more information.

AUCTIONEER

Curt Westland 605-210-3329

HEALTH

All cattle have been fully vaccinated and wormed/poured for lice. All bulls have passed a breeding soundness exam. All cattle sell with proper health papers for interstate transportation.

TERMS AND CONDITIONS

All cattle sold at auction under the standard terms and conditions recommended by the American Gelbvieh Association and the American Angus Association.

VIDEO OF SALE OFFERING

Videos of the bulls will be available on DVAuctions.com and mtrcattlecompany.com and our Facebook page MTR Cattle Company.

LIABILITY

All persons attending the sale do so at their own risk. The Rives, Buffalo Livestock Marketing or anyone affiliated with the sale assume no liability for accidents, loss or damages on the sale site.

SUPPLEMENT SHEET

Supplement sheet will be available sale day with any additions or corrections to the catalog. Any information on the supplement sheet and announcements from the block will take precedence over the information in the catalog.

WINTERING/DELIVERY

We can winter your bulls free of charge until April 1, 2026. Free delivery up to 250 miles. You are also welcome and encouraged to haul your bulls home with you sale day.

Sale Day Information

Bulls will be at Buffalo Livestock Marketing on the morning of the sale. They can be viewed at the ranch anytime before then.

There will be 4 ways to bid on bulls on sale day:

1. Come to the sale to view and bid on the bulls yourself. We always hope see you there but we know it's not always possible to make it to the sale, especially this time of year.
2. Bid over the phone on the bid line phone or call one of our cell numbers. Please call before sale begins to get approval and a buyer number.
 - Buffalo Livestock Marketing 307-684-0789
 - Miles cell 307-217-0408
 - Tiffany cell 307-217-0409
3. Proxy bidding. Call us ahead of time with your bids and we will have representative handle your bids for you just as if you were there yourself.
4. View videos and bid live on DVAuction.com. Please register at prior to the beginning of the sale and get buyer approval for the MTR Cattle Company sale specifically.
6. If you have any questions please feel free to give us a call.



Angus Sires



Kenny Institution 2010

Basin Deposit 6249
 Basin Safe Deposit 9324
 Basin Joy 2006
 Bar R Jet Black 5063
 Kenny Pet Polite 0810
 Kenny Pet Polite 8410

CED	BW	WW	YW	CEM	Milk	SEN	CW	Marb	RE	Fat	\$W	\$G	\$B
18	-3.9	72	123	18	31	-5	58	0.79	1.17	0.017	87	66	176



Tehama Patriarch F028

Hoover Dam
 S S Niagara Z29
 Jet S S X144
 Connealy Thunder
 Tehama Elite Blackbird D826
 Tehama Elite Blackbirk Z630

CED	BW	WW	YW	CEM	Milk	SEN	CW	Marb	RE	Fat	\$W	\$G	\$B
13	-1.8	69	132	15	29	-21	52	0.96	0.71	0.029	84	68	165



MTR Titlest 619

Coleman Charlo 0256
 S A V Raindance 6848
 S A V Blackcap May 4136
 Bon View New Design 878
 MTR Black Lady 3111 ET
 MTR Black Lady 59

CED	BW	WW	YW	CEM	Milk	SEN	CW	Marb	RE	Fat	\$W	\$G	\$B
10	0.6	61	108	11	27	-14					55		

Angus Sires

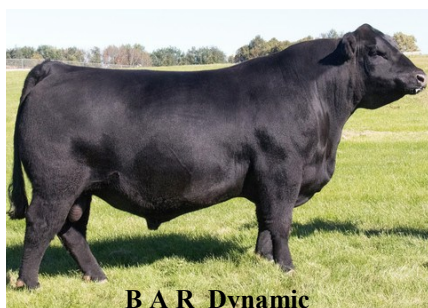


Basin True Grit 1021

Basin True Grit 1021

SAV Rainfall 6846
 Square B True North 8052
 Elbanna Of Conanga 1209
 Basin Rainmaker 4404
 Basin Camilla 9044
 Basin Camilla 7026

CED	BW	WW	YW	CEM	Milk	\$EN	CW	Marb	RE	Fat	\$W	\$G	\$B
11	-2.2	67	120	12	30	-20	53	1.27	1.06	0.070	74	84	192



B A R Dynamic

B A R Dynamic

Basin Payweight 1682
 Deer Valley Growth Fund
 Deer Valley Rita 36113
 Three Trees Xceptional B0048
 B A R Blackcap 7235-B0048
 B A R Blackcap 3683-745

CED	BW	WW	YW	CEM	Milk	\$EN	CW	Marb	RE	Fat	\$W	\$G	\$B
15	-2.5	87	149	15	23	-44	57	1.19	0.60	0.033	86	77	173



Ruggles Charisma 0643

Ruggles Charisma 0643

Connealy Confidence 0100
 Connealy Confidence Plus
 Elbanna Of Conanga 1209
 Sitz Upward 307R
 Mill Bar Blackeyes 7432
 Mill Bar Black Powder 5839

CED	BW	WW	YW	CEM	Milk	\$EN	CW	Marb	RE	Fat	\$W	\$G	\$B
12	-0.6	66	122	7	27	-9	57	0.86	0.94	0.071	67	62	170

Angus Sires



Connealy Surpass 885D

TEX Playbook 5437
 BJ Surpass
 BJ Profet 5275
 MGR Treasure
 Breeva Of Conanga 885D
 Brenna Of Conanga 6796

CED	BW	WW	YW	CEM	Milk	SEN	CW	Marb	RE	Fat	\$W	\$G	\$B
10	1.3	85	140	17	27	-21	48	0.52	0.55	0.016	91	45	120



Vermilion G017 Bomber K007

Casino N33 Bomber
 Vermilion Bomber G017
 Vermilion Edwina 7078
 SITZ Commerce 670F
 Vermilion Lass 0024
 Vermilion Lass 8171

CED	BW	WW	YW	CEM	Milk	SEN	CW	Marb	RE	Fat	\$W	\$G	\$B
5	2.6	89	143	7	18	-33	70	0.65	0.62	0.052	76	50	156



SAV Remington 5609

Rito 707of Ideal 3407 7075
 SAV Resource 1441
 SAV Blackcap May 4136
 SAF 598 Bando 5175
 SAV Emblynette 3301
 SAV Emblynette 7319

CED	BW	WW	YW	CEM	Milk	SEN	CW	Marb	RE	Fat	\$W	\$G	\$B
6	1.5	60	106	8	23	-16	46	0.45	0.38	0.072	52	35	138

Balancer Sires

MTR Response 918H

SAV Resource 1441
 Sitz Response 405C
 Sitz Ellunas Elite 656T
 Cole Creek Cedar Ridge 1V
 MTR Miss Cedar Ridge 905F
 MTR Miss Fancy This 200X

CED	BW	WW	YW	CEM	Milk	TM	CW	Marb	RE	Fat
10	-0.6	80	150	6	34	74	65	0.56	0.58	0.030



RAIL Esquire 380L

RAIL Esquire 380L

3F Epic 4631
 JRI Esquire 254G230 ET
 Ms Prairie Rose 254Z630ET
 3G Yarborough 186Y
 Ms Yarborough 7106E
 Ms Total 4112B

CED	BW	WW	YW	CEM	Milk	TM	CW	Marb	RE	Fat
13	-1.7	81	130	6	19	59	46	0.31	0.67	0.000



TJB Rebel Yell 804F ET

TJB Rebel Yell 804F ET

Basin Payweight 1682
 JRI Probita 254D28
 Clementine 254Z8
 BC Lookout 7024
 Anissa 921U ET
 Anissa 337M ET

CED	BW	WW	YW	CEM	Milk	TM	CW	Marb	RE	Fat
12	2.1	75	124	7	28	65	54	0.55	0.53	0.000

Purebred Angus Bulls



Lot 1

1

MTR True Grit 1625

REG: 21496805

Calf Tag 165 Purebred Angus

2/20/2025

Square B True North 8052
 Basin True Grit 1021
 Basin Camilla 9044
 SAV Remington 5609
 MTR Black Lady 1260
 MTR Black Lady 617

BW	84
WW	787
YW	1358
SC	

CED	BW	WW	YW	CEM	Milk	SEN	CW	Marb	RE	Fat	\$W	\$F	\$M
7	0.5	68	120	11	30	-26					66	88	68

2

MTR Surpass 2025

REG: 21496817

Calf Tag 202 Purebred Angus

2/23/2025

BJ Surpass
 Connealy Surpass 885D
 Breeva of Conanga 885D
 Square B True North 8052
 MTR Black Lady 1213
 MTR Black Lady 467

BW	80
WW	831
YW	1359
SC	

CED	BW	WW	YW	CEM	Milk	SEN	CW	Marb	RE	Fat	\$W	\$F	\$M
10	0.7	76	128	14	31	-19					76	89	81

Purebred Angus Bulls



Lot 3

3

MTR True Grit 1465

REG: 21496802

Calf Tag 146 Purebred Angus

2/16/2025

Square B True North 8052
 Basin True Grit 1021
 Basin Camilla 9044
 SAV Remington 5609
 MTR Black Lady 1049
 MTR Black Lady 5115 ET

BW	80
WW	772
YW	1370
SC	

CED	BW	WW	YW	CEM	Milk	SEN	CW	Marb	RE	Fat	\$W	\$F	\$M
8	-0.2	63	111	11	27	-17					59	84	66

4

MTR Bomber 1645

REG: 21496806

Calf Tag 164 Purebred Angus

3/16/2025

Vermillion Bomber G017
 Vermillion G017 Bomber K007
 Vermillion Lass 0024
 SAV Rairdance 6848
 MTR Queen Lass 1200
 MTR Queen Lass 677

BW	90
WW	764
YW	1321
SC	

CED	BW	WW	YW	CEM	Milk	SEN	CW	Marb	RE	Fat	\$W	\$F	\$M
5	2.7	72	123	6	22	-20					55	85	76

Purebred Angus Bulls



Lot 5

5

MTR Institution 1455

REG: 21496801

Calf Tag 145 Purebred Angus

2/19/2025

Basin Safe Deposit 9324
 Kenny Institution 2010
 Kenny Pet Polite 0810
 SAV Remington 5609
 MTR Black Lady 958
 MTR Black Lady 755

BW	68
WW	758
YW	1340
SC	

CED	BW	WW	YW	CEM	Milk	SEN	CW	Marb	RE	Fat	\$W	\$F	\$M
17	-3.4	63	111	16	30	-9					66	83	81

Should make a heifer bull

6

MTR Patriarch 1505

REG: 21496803

Calf Tag 150 Purebred Angus

3/1/25

S S Niagara Z29
 Tehama Patriarch F028
 Tehama Elite Blackbird D826
 Sitz Response 405C
 MTR Sky Lucy 649
 MTR Sky Lucy 251

BW	76
WW	785
YW	1315
SC	

CED	BW	WW	YW	CEM	Milk	SEN	CW	Marb	RE	Fat	\$W	\$F	\$M
11	-0.5	63	119	12	28	-14					57	89	82

Should make a heifer bull

Purebred Angus Bulls



7	MTR Dynamic 1715	REG: 21496809
	Calf Tag 171 Purebred Angus	3/12/2025

Deer Valley Growth Fund
 B A R Dynamic
 B A R Black 7235-B0048
 SAV Raindance 6848
 MTR Black Lady 1351
 MTR Black Lady 1108

BW	90
WW	806
YW	1440
SC	

CED	BW	WW	YW	CEM	Milk	SEN	CW	Marb	RE	Fat	\$W	\$F	\$M
8	1.3	76	134	8	25	-25					66	97	65

8	MTR Titlest 1885	REG: 21496813
	Calf Tag 188 Purebred Angus	3/3/2025

SAV Raindance 6848
 MTR Titlest 619
 MTR Black Lady 3111 ET
 SITZ Response 405C
 MTR Black Lady 652
 MTR Black Lady 9111 ET

BW	86
WW	801
YW	1257
SC	

CED	BW	WW	YW	CEM	Milk	SEN	CW	Marb	RE	Fat	\$W	\$F	\$M
5	2.3	64	116	7	28	-19					53	85	59

Purebred Angus Bulls



Lot 9

9

MTR Charisma 1655

REG: 21496807

Calf Tag 165 Purebred Angus 3/1/2025

Connealy Confidence Plus
 Ruggles Charisma 0643
 Mill Bar Blackeyes 7432
 SAV Raindance 6848
 MTR Black Lady 980
 MTR Black Lady 245

BW	84
WW	744
YW	1314
SC	

CED	BW	WW	YW	CEM	Milk	SEN	CW	Marb	RE	Fat	\$W	\$F	\$M
9	0.7	63	115	8	27	-13					55	90	70

10

MTR Institution 1875

REG: 21496819

Calf Tag 187 Purebred Angus 2/28/2025

Basin Safe Deposit 9324
 Kenny Institution 2010
 Kenny Pet Polite 0810
 MTR Titlest 619
 MTR Black Lady 662
 MTR Black Lady 532

BW	66
WW	705
YW	1281
SC	

CED	BW	WW	YW	CEM	Milk	SEN	CW	Marb	RE	Fat	\$W	\$F	\$M
18	-3.7	60	103	17	29	-4					63	81	84

Should make a heifer bull

Purebred Angus Bulls



Lot 11

11

MTR Surpass 1935

REG: 21496814

Calf Tag 193 Purebred Angus

2/2/2025

BJ Surpass
 Connealy Surpass 885D
 Breeva of Conanga 885D
 Musgrave Crackerjack
 MTR Black Lady 663
 MTR Black Lady 532

BW	80
WW	761
YW	1318
SC	

CED	BW	WW	YW	CEM	Milk	SEN	CW	Marb	RE	Fat	\$W	\$F	\$M
8	1.5	74	121	12	30	-14					74	82	82

12

MTR Bomber 1395

REG: 21496799

Calf Tag 139 Purebred Angus

3/25/2025

Vermilion Bomber G017
 Vermilion G017 Bomber K007
 Vermilion Lass 0024
 Gmar Game Day A002
 MTR Queen Lass 678
 MTR Queen Lass 472

BW	98
WW	771
YW	1272
SC	

CED	BW	WW	YW	CEM	Milk	SEN	CW	Marb	RE	Fat	\$W	\$F	\$M
1	3.6	69	117	3	26	-14					55	78	77

Purebred Angus Bulls



Lot 13

13

MTR Charisma 1525

REG: 21496804

Calf Tag 152 Purebred Angus 2/25/2025

Connealy Confidence Plus
Ruggles Charisma 0643
Mill Bar Blackeyes 7432

Sitz Response 405C
MTR Black Lady 549
MTR Black Lady 240

BW	66
WW	695
YW	1260
SC	

CED	BW	WW	YW	CEM	Milk	SEN	CW	Marb	RE	Fat	\$W	\$F	\$M
16	-3.0	50	94	12	27	1					47	80	73

Should make a heifer bull

14

MTR Surpass 1995

REG: 21496815

Calf Tag 199 Purebred Angus 2/9/2025

BJ Surpass
Connealy Surpass 885D
Breeva of Conanga 885D

Square B True North 8052
MTR Sky Lucy 1693
MTR Sky Lucy 1581

BW	80
WW	772
YW	1209
SC	

CED	BW	WW	YW	CEM	Milk	SEN	CW	Marb	RE	Fat	\$W	\$F	\$M
9	1.0	75	128	13	28	-16					71	89	80

Purebred Angus Bulls



Lot 15

15	MTR Charisma 1985		REG: 21496821
	Calf Tag 198 Purebred Angus 2/9/2025		

Connealy Confidence Plus
 Ruggles Charisma 0643
 Mill Bar Blackeyes 7432
 Musgrave Crackerjack
 MTR Black Lady 1673
 MTR Black Lady 990

BW	82
WW	725
YW	1240
SC	

CED	BW	WW	YW	CEM	Milk	SEN	CW	Marb	RE	Fat	\$W	\$F	\$M
7	0.9	62	111	5	28	-6					59	86	78

16	MTR Surpass 2015		REG: 21496816
	Calf Tag 201 Purebred Angus 2/21/2025		

BJ Surpass
 Connealy Surpass 885D
 Breeva of Conanga 885D
 SAV Remington 5609
 MTR Black Lady 1033
 MTR Black Lady 3115 ET

BW	68
WW	701
YW	1224
SC	

CED	BW	WW	YW	CEM	Milk	SEN	CW	Marb	RE	Fat	\$W	\$F	\$M
12	-0.5	68	114	16	26	-14					65	80	78

Purebred Angus Bulls



Lot 17

17	MTR Titlest 1845	REG: 21496811
	Calf Tag 184 Purebred Angus	3/12/2025

SAV Raindance 6848
MTR Titlest 619
MTR Black Lady 3111 ET
MTR Titlest 619
MTR Queen Lass 1512
MTR Queen Lass 1029

BW	76
WW	732
YW	1266
SC	

CED	BW	WW	YW	CEM	Milk	SEN	CW	Marb	RE	Fat	SW	SF	SM
10	0.4	59	103	11	28	-12					56	81	75

18	MTR Patriarch 875	REG: 21496798
	Calf Tag 87 Purebred Angus	3/4/25

S S Niagara Z29
Tehama Patriarch F028
Tehama Elite Blackbird D826
Leachman Right Time
MTR Black Lady 2114 ET
MTR Black Lady 59

BW	86
WW	708
YW	1177
SC	

CED	BW	WW	YW	CEM	Milk	SEN	CW	Marb	RE	Fat	SW	SF	SM
7	0.8	54	100	12	26	-8					45	78	77

Purebred Angus Bulls



Lot 19

19	MTR Dynamic 1755	REG: 21496810
-----------	-------------------------	----------------------

Calf Tag 175 Purebred Angus 3/5/2025

Deer Valley Growth Fund
 B A R Dynamic
 B A R Black 7235-B0048
 SAV Raindance 6848
 MTR Black Lady 1451
 MTR Black Lady 958

BW	90
WW	745
YW	1153
SC	

CED	BW	WW	YW	CEM	Milk	SEN	CW	Marb	RE	Fat	\$W	\$F	\$M
9	0.7	71	129	10	25	-27					59	97	58

20	MTR Titlest 1405	REG: 21496800
-----------	-------------------------	----------------------

Calf Tag 140 Purebred Angus 3/21/2025

SAV Raindance 6848
 MTR Titlest 619
 MTR Black Lady 3111 ET
 SAV Remington 5609
 MTR Black Lady 788
 MTR Black Lady 1133 ET

BW	82
WW	700
YW	1129
SC	

CED	BW	WW	YW	CEM	Milk	SEN	CW	Marb	RE	Fat	\$W	\$F	\$M
9	0.4	53	95	10	25	-6					45	79	73

Purebred Angus Bulls



Lot 21

21

MTR Institution 1375

REG: 21496820

Calf Tag 137 Purebred Angus

3/8/2025

Basin Safe Deposit 9324
 Kenny Institution 2010
 Kenny Pet Polite 0810
 SAV Remington 5609
 MTR Sky Lucy 1118
 MTR Sky Lucy 426

BW	58
WW	653
YW	1162
SC	

CED	BW	WW	YW	CEM	Milk	SEN	CW	Marb	RE	Fat	\$W	\$F	\$M
19	-4.4	53	94	18	26	2					52	77	80

Should make a heifer bull

22

MTR Titlest 1705

REG: 21496808

Calf Tag 170 Purebred Angus

4/7/2025

SAV Rairdance 6848
 MTR Titlest 619
 MTR Black Lady 3111 ET
 Square B True North 8052
 MTR Black Lady 1341
 MTR Black Lady 346

BW	76
WW	722
YW	
SC	

CED	BW	WW	YW	CEM	Milk	SEN	CW	Marb	RE	Fat	\$W	\$F	\$M
12	-0.8	60	105	11	28	-7					58	82	79

Purebred Angus Bulls



Lot 23

23	MTR Titlest 775	REG: 21496797
	Calf Tag 77 Purebred Angus	4/2/2025

SAV Raindance 6848
 MTR Titlest 619
 MTR Black Lady 3111 ET

 Connealy Thunder
 MTR Prairie 503
 MTR Prairie 230

BW	70
WW	659
YW	
SC	

CED	BW	WW	YW	CEM	Milk	SEN	CW	Marb	RE	Fat	\$W	SF	\$M
13	-2.0	42	74	13	25	8					39	67	76

24	MTR Titlest 1865	REG: 21496812
	Calf Tag 186 Purebred Angus	4/8/2025

SAV Raindance 6848
 MTR Titlest 619
 MTR Black Lady 3111 ET

 Musgrave Crackerjack
 MTR Black Lady 1662
 MTR Black Lady 960

BW	82
WW	756
YW	
SC	

CED	BW	WW	YW	CEM	Milk	SEN	CW	Marb	RE	Fat	\$W	SF	\$M
8	1.0	62	110	9	27	-17					55	84	71

Purebred Angus Bulls

25

MTR Surpass 2035

REG: 21496818

Calf Tag 203 Purebred Angus 2/26/2025

BJ Surpass
 Connealy Surpass 885D
 Breeva of Conanga 885D
 SAV Remington 5609
 MTR Black Lady 1093
 MTR Black Lady 805

BW	78
WW	604
YW	1119
SC	

CED	BW	WW	YW	CEM	Milk	SEN	CW	Marb	RE	Fat	SW	SF	SM
9	1.7	60	107	14	24	-6					48	79	76

Balancer® and Percentage Gelbvieh Bulls



Lot 26

26	MTR True Grit 497N	REG: 1649267
	Calf Tag 497 Blk Polled Percentage 7.5GV 92.5AN 2/2/2025	

Square B True North 8052
 Basin True Grit 1021
 Basin Camilla 9044
 Tehama Patriarch F028
 MTR Miss Patriarch 474L
 MTR Miss Final Product 429H

BW	82
WW	798
YW	1506
SC	

CED	BW	WW	YW	Milk	TM	CEM	YG	CW	CREA	MARB
14	-2.0	93	155	34	80	10	0.11	62	0.73	0.88

27	MTR Patriarch 446N	REG: 1649258
	Calf Tag 446 Blk Polled Percentage 16.4GV 83.6AN 3/1/2025	

S S Niagara Z29
 Tehama Patriarch F028
 Tehama Elite Blackbird D826
 MTR Final Product 313Z
 MTR Miss Final Product 365F
 MTR Ms Visa's Focus 246X

BW	76
WW	707
YW	1277
SC	

CED	BW	WW	YW	Milk	TM	CEM	YG	CW	CREA	MARB
17	-3.1	80	135	26	67	12	0.11	56	0.47	0.58

Balancer® and Percentage Gelbvieh Bulls



Lot 28

28	MTR Dynamic 434N		REG: 1649257
	Calf Tag 434 Blk Polled Percentage 12.5GV 87.5AN 2/22/2025		

Deer Valley Growth Fund
 B A R Dynamic
 B A R Black 7235-B0048
 R/M Turning Point 1C94
 MTR Miss Turning Point 344D
 MTR Miss Final Spice 134W

BW	80
WW	791
YW	1330
SC	

CED	BW	WW	YW	Milk	TM	CEM	YG	CW	CREA	MARB
21	-3.6	94	152	23	70	13	0.21	56	0.29	0.89

29	MTR Response 492N		REG: 1649265
	Calf Tag 492 Blk Polled Balancer 26.6GV 73.4AN 3/13/2025		

Sitz Response 405C
 MTR Response 918H
 MTR Miss Cedar Ridge 905F
 JRI Probity 254D28
 MTR Miss Probity 432K
 MTR Miss Balancer 292D

BW	86
WW	691
YW	1336
SC	

CED	BW	WW	YW	Milk	TM	CEM	YG	CW	CREA	MARB
11	-0.3	73	126	29	66	7	0.11	52	0.36	0.42

Balancer® and Percentage Gelbvieh Bulls



Lot 30

30	MTR Response 460N	REG: 1649259
	Calf Tag 460 Black Polled Percentage 15.7GV 84.4AN 3/4/2025	

Sitz Response 405C
MTR Response 918H
MTR Miss Cedar Ridge 905F
Cole Creek Cedar Rigdge 1V
MTR Miss Cedar Ridge 363G
MTR Miss Bliss 225X

BW	88
WW	724
YW	1385
SC	

CED	BW	WW	YW	Milk	TM	CEM	YG	CW	CREA	MARB
11	-0.5	74	128	33	70	5	0.14	48	0.30	0.50

31	MTR Patriarch 401N	REG: 1649255
	Calf Tag 401 Blk Polled Percentage 22GV 78AN 3/12/2025	

S S Niagara Z29
Tehama Patriarch F028
Tehama Elite Blackbird D826
MTR Visa's Answer 64U
MTR Miss Answer 422A
MTR Ms Final Light 210X

BW	92
WW	688
YW	1240
SC	

CED	BW	WW	YW	Milk	TM	CEM	YG	CW	CREA	MARB
13	-1.3	79	129	26	66	10	0.09	46	0.43	0.57

Balancer® and Percentage Gelbvieh Bulls



Lot 32

32	MTR Institution 499N	REG: 1649268
	Calf Tag 499 Blk Polled Percentage 4.7GV 95.3AN 2/8/2025	

Basin Safe Deposit 9324
 Kenny Institution 2010
 Kenny Pet Polite 0810
 MTR Response 918H
 MTR Miss Response 458L
 MTR Miss Remington 419G

BW	80
WW	744
YW	1318
SC	

CED	BW	WW	YW	Milk	TM	CEM	YG	CW	CREA	MARB
16	-2.5	86	147	34	78	12	0.10	67	0.73	0.68

33	MTR Bomber 500N	REG: 1649382
	Calf Tag 500 Blk Polled Percentage 2.8GV 94.1AN 2/23/2025	

Vermilion Bomber G017
 Vermilion G017 Bomber K007
 Vermilion Lass 0024
 SAV Final Answer 0035
 MTR Ms Final Answer 400A
 MTR Miss Free Sky 931S

BW	82
WW	703
YW	1268
SC	

CED	BW	WW	YW	Milk	TM	CEM	YG	CW	CREA	MARB
11	-0.6	77	123	22	63	7	0.23	52	0.18	0.51

Balancer® and Percentage Gelbvieh Bulls



Lot 34

34	MTR Rebel Yell 420N	REG: 1649269
	Calf Tag 420 Blk Polled Balancer 36.7GV 63.3AN 3/10/2025	

JRI Probity 254D28
 TJB Rebel Yell 804F ET
 TJB Anissa 921U ET
 Cole Creek Cedar Ridge 1V
 MTR Miss Cedar Ridge 376C
 MTR 282Y

BW	78
WW	736
YW	1265
SC	

CED	BW	WW	YW	Milk	TM	CEM	YG	CW	CREA	MARB
16	-1.0	71	115	28	63	8	0.08	47	0.35	0.48

35	MTR Esquire 493N	REG: 1649266
	Calf Tag 493 Blk Polled Balancer 30.1GV 69.2AN 3/10/2025	

JRI Esquire 254G230 ET
 RAIL Mr Esquire 380L
 RAIL Ms Yarborough 7106E
 Square B True North 8052
 MTR Miss True North 466K
 MTR Miss Rairdance 420H

BW	88
WW	663
YW	1218
SC	

CED	BW	WW	YW	Milk	TM	CEM	YG	CW	CREA	MARB
14	-1.6	74	124	24	60	7	0.04	44	0.52	0.47

Balancer® and Percentage Gelbvieh Bulls



Lot 36

36

MTR Response 487N REG: 1649262

Calf Tag 487 Blk Polled Percentage 10.6GV 89.4AN 3/9/2025

Sitz Response 405C
 MTR Response 918H
 MTR Miss Cedar Ridge 905F
 Musgrave Crackerjack
 MTR Miss Crackerjack 474K
 MTR Miss Final Product 429H

BW	74
WW	716
YW	1264
SC	

CED	BW	WW	YW	Milk	TM	CEM	YG	CW	CREA	MARB
16	-2.3	79	136	32	72	10	0.12	59	0.50	0.55

37

MTR Response 490N REG: 1649264

Calf Tag 490 Blk Polled Percentage 9.4GV 90.6AN 3/10/2025

Sitz Response 405C
 MTR Response 918H
 MTR Miss Cedar Ridge 905F
 Musgrave Crackerjack
 MTR Miss Crackerjack 424K
 MTR Miss Cedar Ridge 375C

BW	92
WW	657
YW	1162
SC	

CED	BW	WW	YW	Milk	TM	CEM	YG	CW	CREA	MARB
10	0.2	72	128	30	66	5	0.14	52	0.38	0.53

Balancer® and Percentage Gelbvieh Bulls



Lot 38

38

MTR Response 486N

REG: 1649261

Calf Tag 486 Blk Polled Percentage 15.3GV 84.4AN 3/14/2025

Sitz Response 405C
 MTR Response 918H
 MTR Miss Cedar Ridge 905F
 Musgrave Crackerjack
 MTR Miss Crackerjack 403K
 MTR Miss Final Answer 452B

BW	82
WW	729
YW	1230
SC	

CED	BW	WW	YW	Milk	TM	CEM	YG	CW	CREA	MARB
13	-1.1	81	139	32	72	8	0.12	60	0.53	0.49

39

MTR Institution 471N

REG: 1649260

Calf Tag 471 Blk Polled Balancer 29.3GV 70.7AN 2/28/2025

Basin Safe Deposit 9324
 Kenny Institution 2010
 Kenny Pet Polite 0810
 TTTT Mighty Hot ET
 MTR Miss Mighty Hot 387H
 MTR Miss X-Factor 357Z

BW	80
WW	635
YW	1092
SC	

CED	BW	WW	YW	Milk	TM	CEM	YG	CW	CREA	MARB
19	-3.8	70	112	29	65	13	0.02	48	0.59	0.62

Balancer® and Percentage Gelbvieh Bulls



Lot 40

40	MTR True Grit 424N	REG: 1649270
	Calf Tag 424 Black Polled Percentage 12.5GV 87.5AN 3/11/2025	

Square B True North 8052
 Basin True Grit 1021
 Basin Camilla 9044
 Cole Creek Cedar Ridge 1V
 MTR Miss Cedar Ridge 375C
 MTR 277Y

BW	90
WW	730
YW	1172
SC	

CED	BW	WW	YW	Milk	TM	CEM	YG	CW	CREA	MARB
13	-1.6	75	122	30	68	7	0.13	44	0.43	0.76

41	MTR Institution 419N	REG: 1649256
	Calf Tag 419 Blk Polled Percentage 12.5GV 87.5AN 3/9/2025	

Basin Safe Deposit 9324
 Kenny Institution 2010
 Kenny Pet Polite 0810
 Cole Creek Cedar Ridge 1V
 MTR Miss Cedar Ridge 399C
 MTR Miss Brilliance 414A

BW	80
WW	664
YW	1166
SC	

CED	BW	WW	YW	Milk	TM	CEM	YG	CW	CREA	MARB
18	-3.3	72	118	32	70	12	0.07	49	0.53	0.62

Commercial Yearling Heifers

20 Commercial Angus and Balancer®/ Percentage Yearling Heifers

Again this year, we are selling a nice set of females selected from our 2025 replacement heifer pen. They are sired by the same group of sires as the bulls in this offering. These heifers are gentle, bunk broke, bangs vaccinated and wormed. They are ready to head into the breeding season, go to work and make a very productive set of cows. These heifers will be sold as commercial cattle without papers.



ANGUS AVERAGE EPDs NON-PARENT SIRES

CED	BW	WW	YW	CEM	Milk	SEN	CW	Marb	RE	Fat	\$W	\$G	\$B
6	1.2	68	120	8	27	-17	56	0.78	0.71	0.020	65	57	155

BALANCER AVERAGE EPDs NON-PARENT SIRES

CED	BW	WW	YW	Milk	TM	CEM	YG	CW	CREA	MARB
13	-0.5	75	117	24	61	7	-0.05	40	0.50	0.39

View videos and bid online on

DVAuction.com



THANKS FOR YOUR INTEREST!

Miles and Tiffany Rives
P.O. Box 392
Buffalo, Wyoming 82834
(307)217-0408 (307)217-0409
mtrctco@vcn.com